

# H.P.L.C. Saccharide Separation

Column : Hypersil, 5 u, NH<sub>2</sub> (4.6 x 250 mm)

Mobile Phase : 75 % ACN / 25 % Water

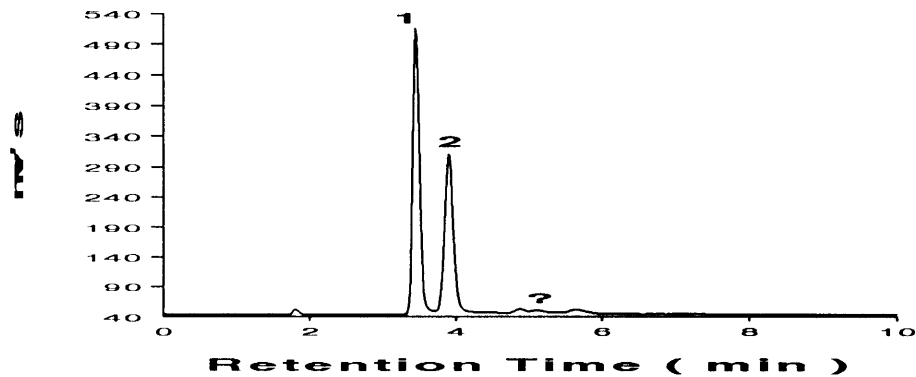
Flow Rate : 1.50 mL / min. Inj. Vol. = 20 uL

Detector : Varex ELSD IIA

Cond: Temp = 130 C ; Gas Flow = 60 mm

Peaks : 1) Fructose, 2) Glucose & 3) Sucrose

Honey 1 %



Molasses 1 %

